

DIXIE-MARCO, INC.
SERVICE BULLETIN #106

Date: April 21, 1970
Revised January 20, 1971

MODELS AFFECTED: Seventies Series Serpentine With
Plastic Coin Reject Assembly.
DN175-5, DN225-5 and DN300-5

REASON: To provide a replacement Reject Assembly as Customer
Location dictates.

NOTE: Read attached instructions (A4440.05) especially as regards
use of a metal file.

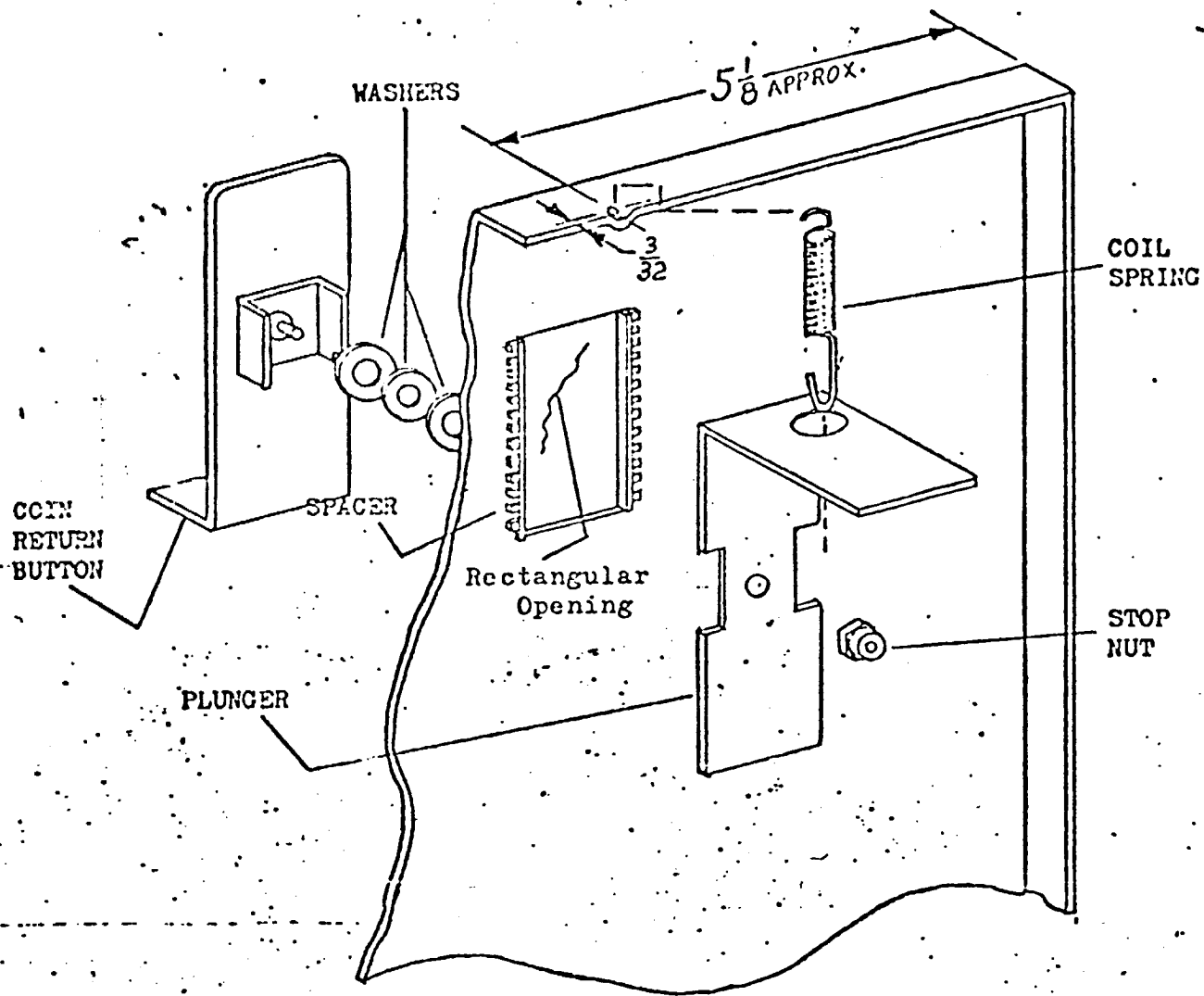
ORDER AS: B/M143,011,400.04 Replacement Metal Button (Reject Assembly).

On some locations where the Plastic Coin Reject Assembly does
not "hold up" when subjected to rough useage, the Kit outlined
below will correct the problem.

KIT CONSISTS OF:

- | | | | |
|----|---------|-----------------|---------------------------------------|
| a. | One (1) | A4440.05 | Instructions |
| b. | One (1) | A143,011,500.03 | W/A Coin Return Button |
| c. | Two (2) | A143,010,180.03 | Spacer - Nylon - 2-1/2" long |
| d. | One (1) | A143,010,190.03 | Plunger |
| e. | One (1) | 900,700,210.01 | Flat Washer <i>Do Not Stock</i> |
| f. | Two (2) | 900,700,060.01 | Flat Washer |
| g. | One (1) | 900,800,520.01 | Elastic Stop Nut <i>service Stock</i> |
| h. | One (1) | A901,700,210.31 | Coil Spring |
| i. | One (1) | 903,801,570.41 | Coin Return Label |

DIXIE-MARCO, INC.
Service Department



INSTRUCTIONS FOR INSTALLATION
OF REPLACEMENT METAL BUTTON

1. REMOVE PLASTIC BUTTON, PLUNGER, AND NYLON STRIPS.
2. DRILL A 1/16" HOLE AS SHOWN, DEPRESSING FLANGE AT HOLE TO PREVENT SPRING FROM RUBBING.
3. FILE THE METAL AWAY FROM THE SIDES OF THE RECTANGULAR OPENING IF THE OPENING IS TOO SMALL. THE WIDTH SHOULD BE ONE (1) INCH OR SLIGHTLY OVER.
4. ASSEMBLE BUTTON AS SHOWN AND ATTACH SPRING.